



Bradley House Raymouth Road, London, SE16 2DL

£315,000 Leasehold



Nestled on Raymouth Road in the vibrant heart of London, this delightful two-bedroom flat presents an excellent opportunity for both first-time buyers and investors alike. The property boasts a bright and spacious lounge, which not only serves as a perfect space for relaxation but also provides access to a charming private balcony, ideal for enjoying a morning coffee or evening sunset.

Conveniently located just a short stroll from Bermondsey Jubilee station, commuting to central London and beyond is both easy and efficient. Additionally, the proximity to Southwark Park offers a lovely green space for leisurely walks, picnics, or outdoor activities.

Auctioneers Additional Comments

Pattinson Auction are working in Partnership with the marketing agent on this online auction sale and are referred to below as 'The Auctioneer'.

This auction lot is being sold either under conditional (Modern) or unconditional (Traditional) auction terms and overseen by the auctioneer in partnership with the marketing agent.

The property is available to be viewed strictly by appointment only via the Marketing Agent or The Auctioneer. Bids can be made via the Marketing Agents or via The Auctioneers website.

Please be aware that any enquiry, bid or viewing of the subject property will require your details being shared between both any marketing agent and The Auctioneer in order that all matters can be dealt with effectively.

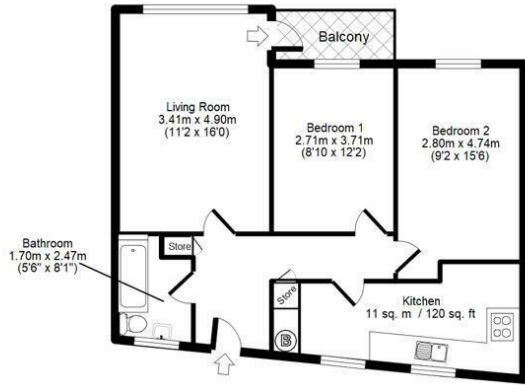
A Legal Pack associated with this particular property is available to view upon request and contains details relevant to the legal documentation enabling all interested parties to make an informed decision prior to bidding. The Legal Pack will also outline the buyers' obligations and sellers' commitments. It is strongly advised that you seek the counsel of a solicitor prior to proceeding with any property and/or Land Title purchase.

- TWO DOUBLE BEDROOM
- PRIVATE BALCONY
- MODERN FITTED KITCHEN
- MOMENTS FROM SOUTHWARK PARK
- NO ONWARD CHAIN
- Southwark Council
- SERVICE CHARGE £1458.28PA
- GROUND RENT £10.00PA
- REMAINING LEASE 92yr of 125

Viewing

Please contact our Oppida Estates Ltd Office on 0207 232 2222 if you wish to arrange a viewing appointment for this property or require further information.

Bradley House, SE16



APPROX GROSS INTERNAL FLOOR AREA: 62 sq. m / 662 sq. ft

Whilst every attempt has been made to the accuracy of the floor plan contained here, measurements of doors, windows, rooms and any other items are approximate and no responsibility is taken for any error, omission or mis-statement. This plan is for illustrative purposes only and should be used as such by any prospective purchaser or tenant.
WWW.AM-SERVICES.UK

Energy Efficiency Rating		Current	Potential
Very energy efficient - lower running costs			
(92 plus) A			
(81-91) B			
(69-80) C		73	77
(55-68) D			
(39-54) E			
(21-38) F			
(1-20) G			
Not energy efficient - higher running costs			
England & Wales		EU Directive 2002/91/EC	



These particulars, whilst believed to be accurate are set out as a general outline only for guidance and do not constitute any part of an offer or contract. Intending purchasers should not rely on them as statements of representation of fact, but must satisfy themselves by inspection or otherwise as to their accuracy. No person in this firm's employment has the authority to make or give any representation or warranty in respect of the property.

202 Jamaica Road, London, SE16 4RT

T: 0207 232 2222 | F: 020 7232 2112

E: sales@oppida.com

www.oppida.com